

WE SELL, RENT, LEASE, INSTALL, DEMOBILIZE & TRANSPORT



INFLATABLE FABRIC STRUCTURES

Oil & Gas, Construction & Mining Applications

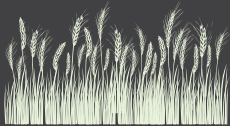


VERSATILE INFLATABLE FABRIC STRUCTURES

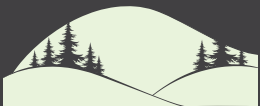
CAN WITHSTAND A VARIETY OF TERRAIN



Alpine



Grasslands



Rural Settings



Urban Settings

A WIDE ARRAY OF ANCHORING SYSTEMS

Rock Anchors



Concrete Blocks



Water Tanks



Screw Piles



From soft to hard soil, concrete to existing foundations, our structures can be anchored down almost anywhere.

FLEXIBLE



DESIGN & SIZE OPTIONS

We can build to your specifications.

DOOR MODULES & OVERHEAD SHOP DOORS

We have a wide variety of doors to close our structures, ranging from static to retractable and mobile.



STANDS UP TO THE HARSHTEST OF ELEMENTS



- ◆ Wind Speeds of up to 150 km/h
- ◆ Snow Load up to 100 kg/m²
- ◆ Temperature Range -50°C to +70°C
- ◆ Waterproof
- ◆ UV Resistant
- ◆ 15 yr. Lifespan

FOR MORE INFORMATION PLEASE CONTACT

Terry Lempriere | 403.988.5367
President & CEO | terry@tegrastructures.com



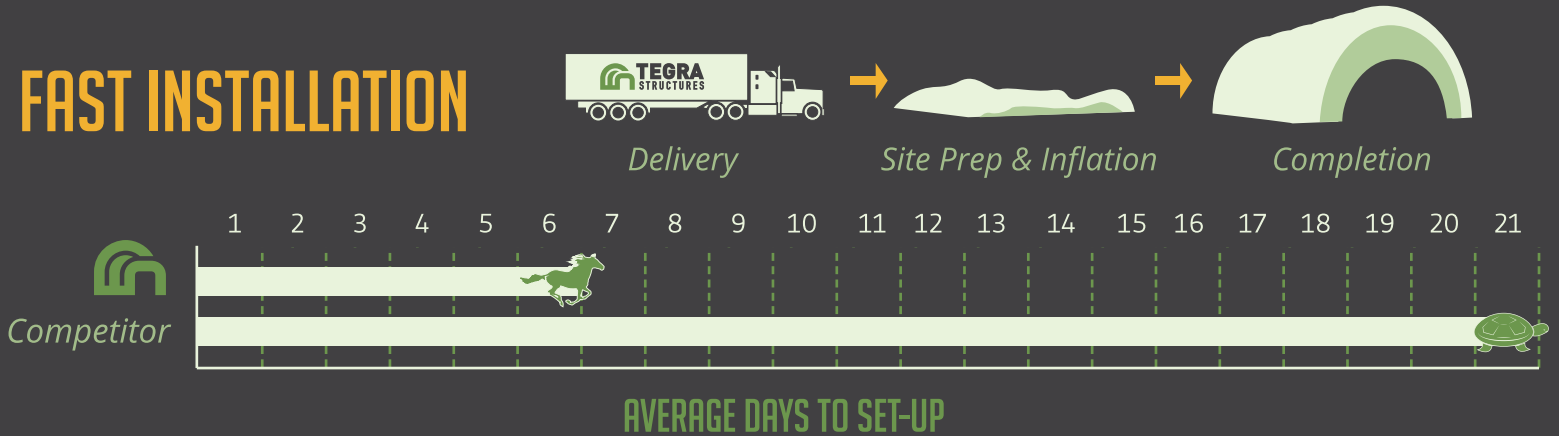
WWW.TEGRASTRUCTURES.COM

BUILD AIR STRUCTURES - SAVING YOUR BOTTOM LINE

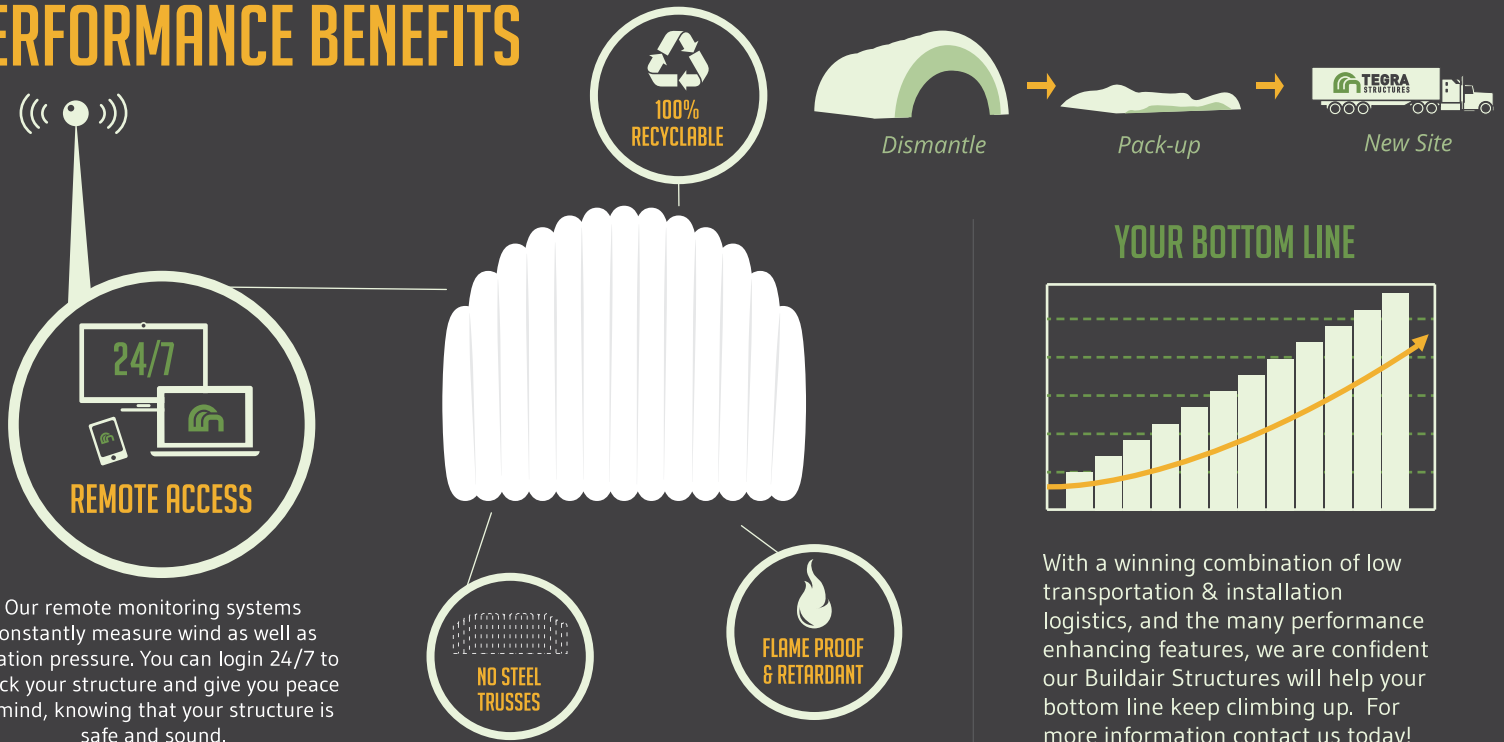
LOWER TRANSPORTATION COSTS



FAST INSTALLATION

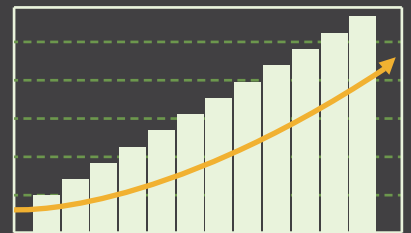


PERFORMANCE BENEFITS



Our remote monitoring systems constantly measure wind as well as inflation pressure. You can login 24/7 to check your structure and give you peace of mind, knowing that your structure is safe and sound.

YOUR BOTTOM LINE



With a winning combination of low transportation & installation logistics, and the many performance enhancing features, we are confident our Buildair Structures will help your bottom line keep climbing up. For more information contact us today!

FOR MORE INFORMATION PLEASE CONTACT

Terry Lempriere | 403.988.5367
 President & CEO | terry@tegrastructures.com